



Australian
Forest
Products
Association

LYONS ELECTORATE

A FOREST INDUSTRIES PROFILE



TASMANIA
\$1.2 BILLION
economic contribution



LYONS
2,297 JOBS
across the forest
product industries

FOREST PRODUCT INDUSTRIES

**DIRECT
EMPLOYMENT**
(Persons)

**INDIRECT
EMPLOYMENT**
(Persons)

LYONS



967



1,330

TASMANIA



3,586



4,931

AUSTRALIA



76,400



105,050

LYONS FOREST PRODUCT INDUSTRIES

 **HARDWOOD PLANTATIONS**

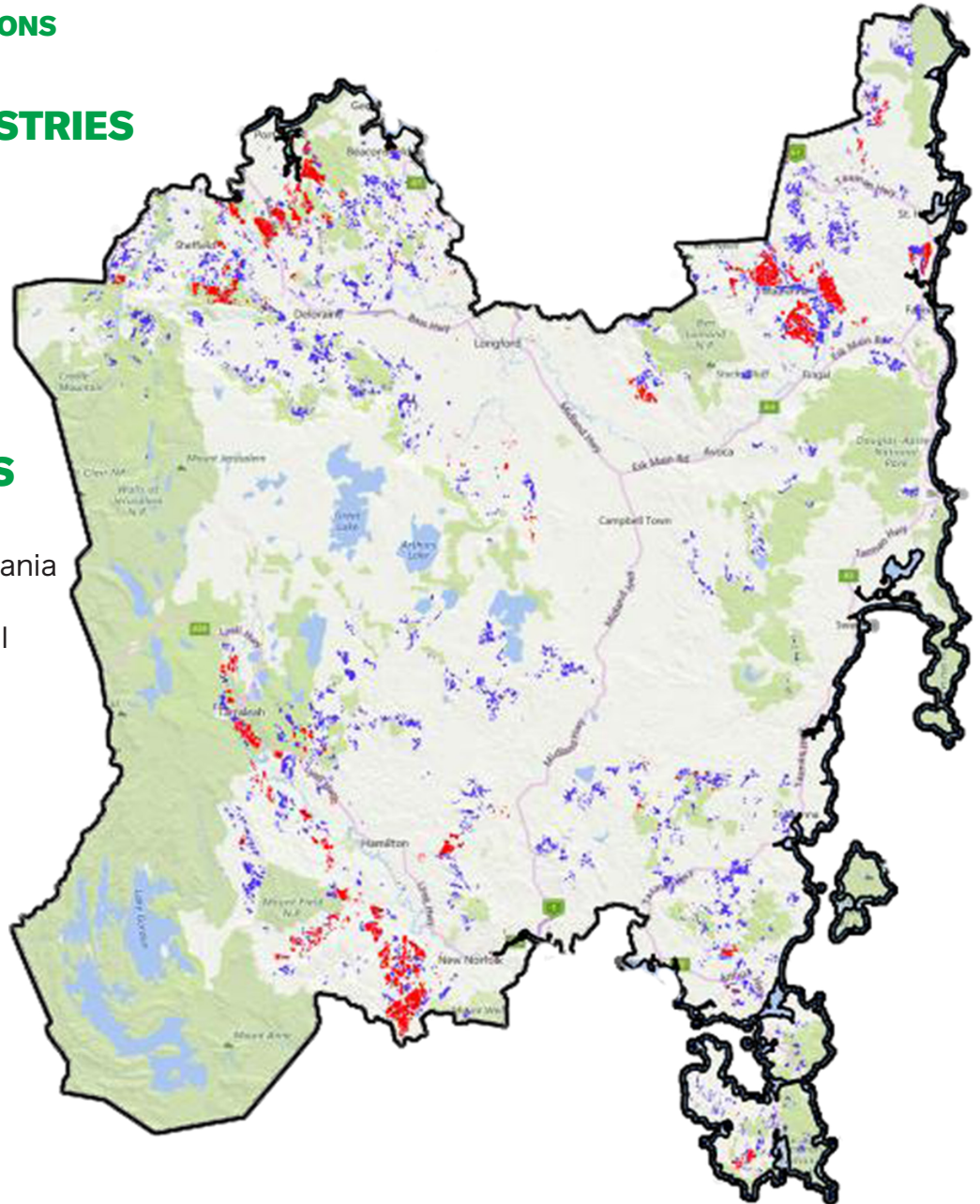
 **SOFTWOOD PLANTATIONS**

PRODUCTS & INDUSTRIES IN THE AREA:

- Sawmills
- Softwood and hardwood plantations
- Managed native forest
- Silvicultural services

MAJOR EMPLOYERS INCLUDE:

- Sustainable Timber Tasmania
- Norske Skog
- Western Junction Sawmill
- Other smaller operators



**Australian
Forest
Products
Association**

AFPA is the peak national industry body representing the resources, processing, and pulp and paper industries covering the forest products value chain.

AFPA represents all elements of the value chain from the sustainable harvesting of plantations and multiple use natural forest resource including forest establishment and management, harvesting and haulage, processing of timber resources and manufacture of pulp and paper.