



Australian Forest Products Association

BASS ELECTORATE

A FOREST INDUSTRIES PROFILE



TASMANIA
\$1.2 BILLION
economic contribution



BASS
2,238 JOBS
across the forest product industries

FOREST PRODUCT INDUSTRIES

DIRECT EMPLOYMENT
(Persons)

INDIRECT EMPLOYMENT
(Persons)

BASS



942



1,296

TASMANIA



3,586



4,931

AUSTRALIA



76,400



105,050

BASS FOREST PRODUCT INDUSTRIES

 **HARDWOOD PLANTATIONS**

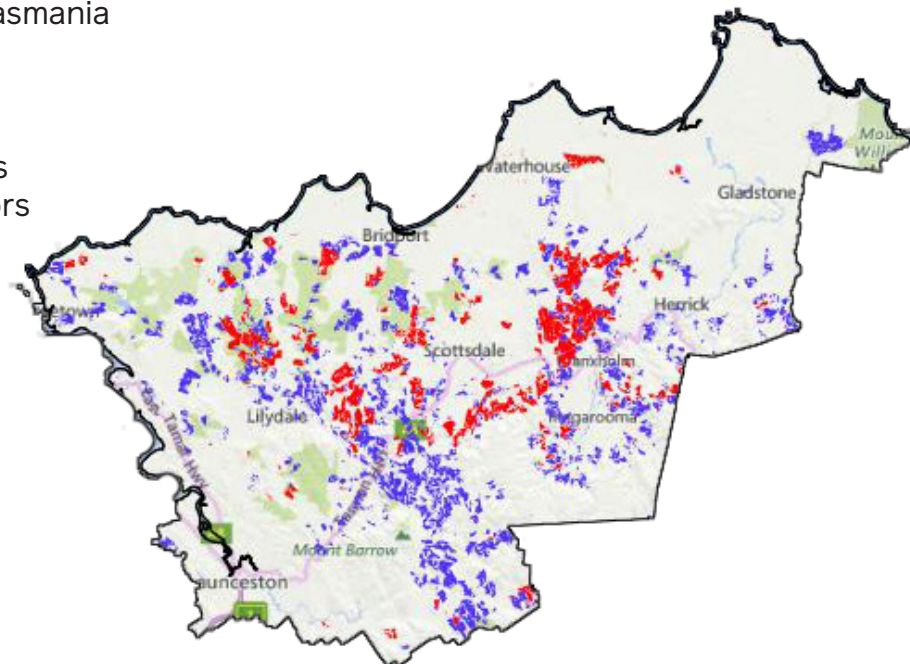
 **SOFTWOOD PLANTATIONS**

PRODUCTS & INDUSTRIES IN THE AREA:

- Sawmills
- Particleboard processing plant
- Softwood plantations
- Managed native forest
- Forestry related export activities

MAJOR EMPLOYERS INCLUDE:

- OPAL
- Timberlink
- NSFP
- Forico
- Sustainable Timber Tasmania
- Midway
- Reliance
- Timberlands Pacific
- Wood Based Products
- Other smaller operators



**Australian
Forest
Products
Association**

AFPA is the peak national industry body representing the resources, processing, and pulp and paper industries covering the forest products value chain.

AFPA represents all elements of the value chain from the sustainable harvesting of plantations and multiple use natural forest resource including forest establishment and management, harvesting and haulage, processing of timber resources and manufacture of pulp and paper.